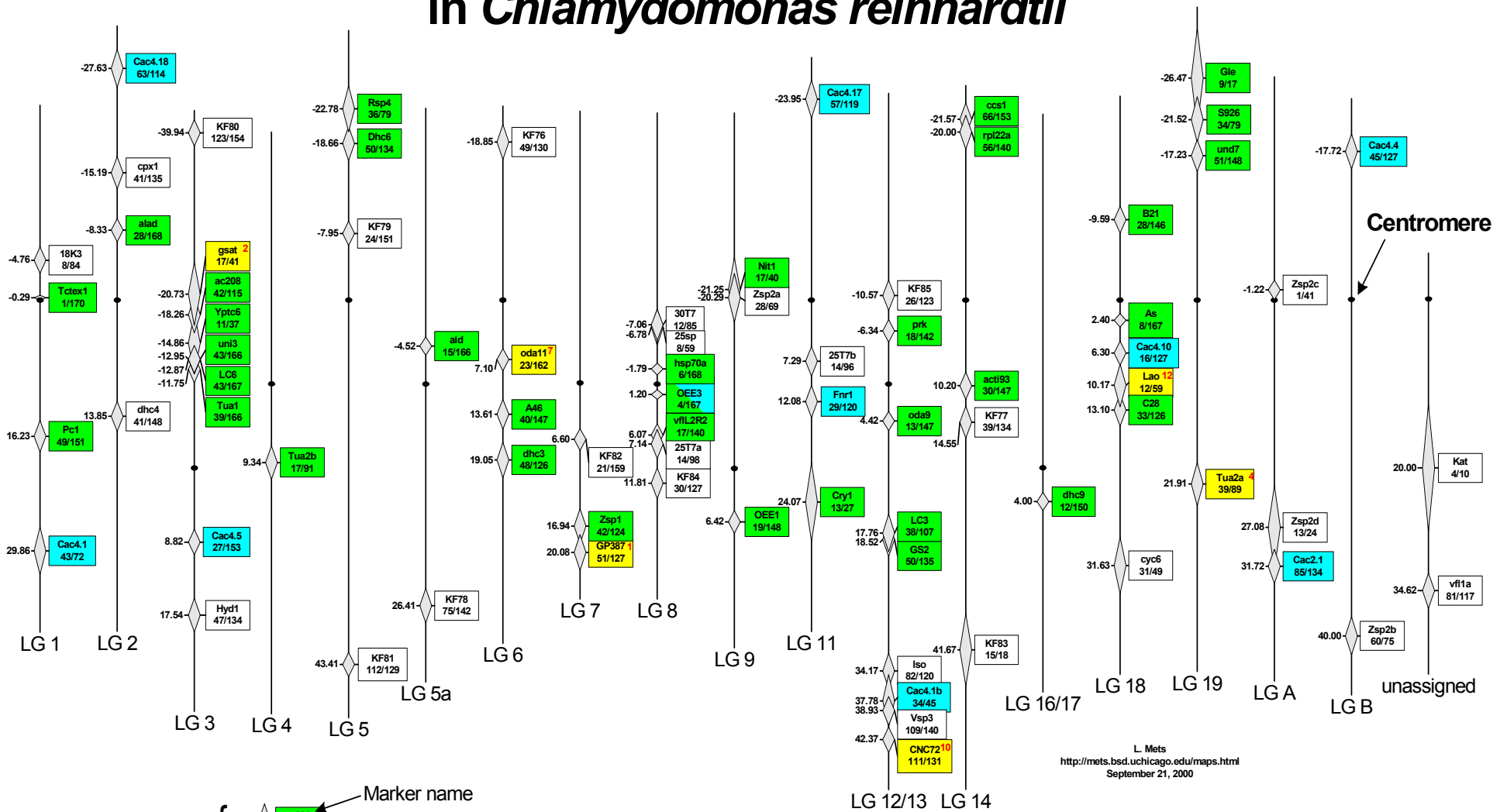


Centromere Distances for Molecular Markers in *Chlamydomonas reinhardtii*



Cac4.5 15/128 Markers homologous to those within 0.1cM of centromeres in Arabidopsis

ac208 42/115 Markers used for linkage group assignment based upon linkages in the random spore map

gsat 17/41 Markers assigned to different linkage groups than those in the random spore map

To view random spore map: <http://www.botany.duke.edu/chlamy/ChlamyGen/maps.html>